

1050 Ride-on sweeper



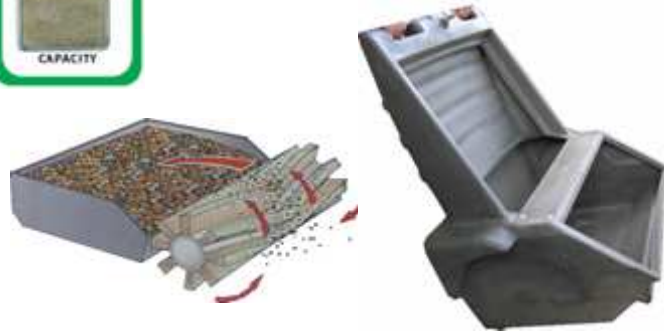
| TECHNICAL DATA | | 1050 E | 1050 DP |
|------------------------|------|--------|------------|
| Sweeping widths: | | | |
| with 2 side brushes | mm. | 1100 | 1100 |
| with 1 side brush | mm. | 875 | 875 |
| with main brush only | mm. | 650 | 650 |
| Waste hopper volume | l. | 70 | 70 |
| Filter surface | sqm | 4 | 4 |
| Maximum climbing grade | % | 16 | 16 |
| Maximum speed | km/h | 6 | 6 |
| Power supply | | 24 V | Petrol-24V |
| | | 1 kW | 3,7 kW |
| Empty weight | kg | 173 | 230 |
| Length | mm. | 1400 | 1400 |
| Width | mm. | 816 | 816 |
| Hieght | mm. | 1142 | 1142 |



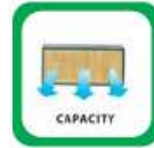
1050 Great productivity



Huge hopper capacity



Over-throw sweeping concept allows to load completely the 70 litre hopper volume



Extensive filter surface



4 square meter filtering surface with correct dust and air passage space between each element.



Large sweeping path



65 cm main brush plus two side brush for a sweeping width of 1,1 metres



Extensive running time

Battery version can contain 4 x 6V - 240 Ah for over 4h run time

Dual Power version has over 3 hour run time (3 litre tank) in petrol mode before refill is necessary.

Can contain 2 x 12V – 80Ah batteries for a battery run time of nearly 1,5 hours.

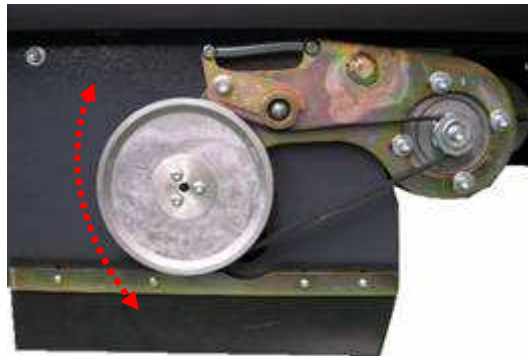
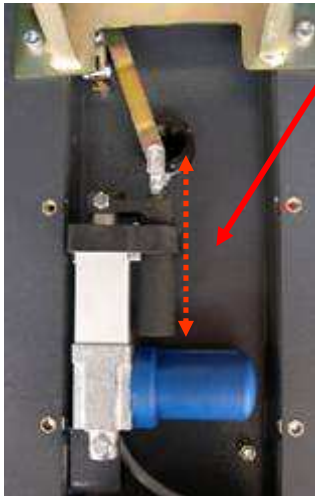


1050 High performance (1)



SLS (Self Levelling System) automatic brush pressure control

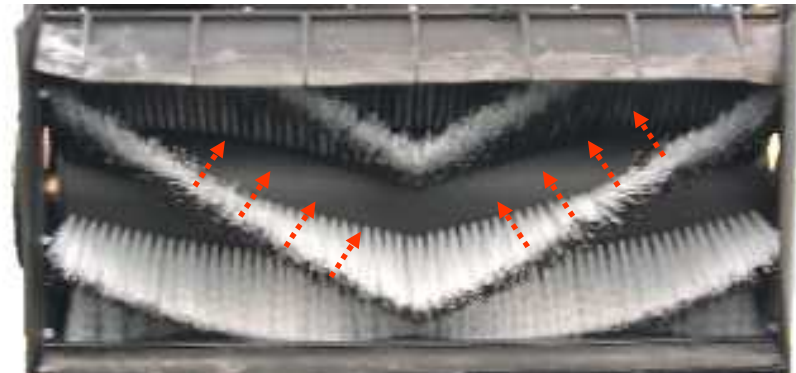
System that adapts immediately the brush thanks to a special shock absorber. The actuator moves only in case brush adapting requirements are higher.



- The system allows the brush:
- to immediately and constantly follow all types of surfaces
 - to self adjust brush pressure until the brush is completely worn out
 - No need to check brush wear as brush replacement is indicated automatically on control panel display



Main brush special “V” shape design



Assures debris collection to the centre of the hopper and avoids leaving dirt lines on the side of the machine



Special moulded rubber flap with pines help dirt be collected towards the sides of the brush compartment in presence of big quantities of debris.

1050 High performance (2)



Dust micro filtration



Filter with incorporated rubber gasket for maximum control of dust



Dust flap for large debris collection



Easily operated by pressing lever on left hand side



Adjustable side brush rpm



Adjustment from 20 to 100 rpm. Assures best sweeping and dust containing results what ever the debris to collect.

1050 High performance (3)



Pre-programmed working settings

Each Program can be fully personalized in:

- Main brush pressure

The system works by reading the amp draw of the brushes and the pressure is adjusted by an actuator on the brush head. An IPC patent that consists in a spring between the actuator and the brush deck allows immediate brush pressure adjustment without having the actuator being powered constantly.

| Example: | P1 | P2 | P3 | MAX |
|-------------|-------|-------|-------|------|
| Display nr. | 20 | 50 | 70 | 100 |
| Amp | 10-11 | 12-13 | 15-16 | 18 |
| Brush mark | 2 cm | 4 cm | 6 cm | 8 cm |

Note: Brush mark is the contact width of the brush on the ground surface. This is the best way to measure brush pressure.

- Speed (0-6Km/h)

- Automatic filter shaker (on or off)

The automatic filter shaking (cleaning) program can be adjusted from intervals that go from every 10 seconds up to every 8 minutes working time.

- Traction stop when filter is shaken (on or off)

It is also possible to program the machine traction stop when the filter is automatically being cleaned. Once the filter has been cleaned the traction mode re-starts.

- Automatic main brush lift in reverse gear (on or off)

Avoids recycling dirt in working mode when the machine is being reversed.

- Functions stop automatically if pedal released (on or off)



3 independent programs allow best settings for all types of applications. Filter shaker can be operated at any time

1050 Ergonomics, user friendly (1)



Easy to use control panel



Side brush levers

Engine starting on DP version

Just choose Program 1,2 or 3



Designed to assure minimum noise levels



Low noise electrically powered vacuum fan



Great manoeuvrability thanks to an optimum weight distribution



Battery version

Dual Power version

Easy to steer thanks to the design of the engine and battery compartments

1050 Ergonomics, user friendly (2)



Great visibility whilst working



Both side brushes are easily seen whilst working.
Front part of the machine completely open to allow ease in manoeuvrability and great visibility



Designed for maximum comfort



Comfortable seating and ergonomic traction pedal.
Operator can step on machine from both sides



Battery level indicator



The battery is protected as follows:

21,5V = Display indicates battery in reserve and machine can still work

20,5V = Display indicates battery to be charged. All functions stop except traction

18V = Machine stops also traction in order to protect battery

1050 Ergonomics, user friendly (3)



Flashing beacon



Maximum visibility and safety



Automatic stop (by command release) in working mode

Main brush
Side brushes
Vacuum
Traction



Avoids having to stop and start the machine. All functions stop and start upon traction pedal command.



Hand assisted low dump discharge system



Light weight high density polypropylene hopper complete with handles and wheels for easy transportation and dumping

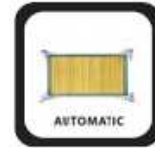
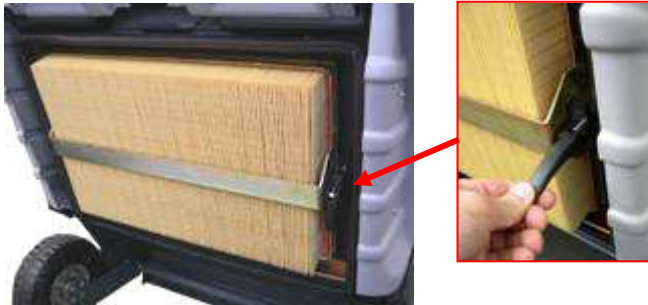
1050 Low maintenance costs (1)



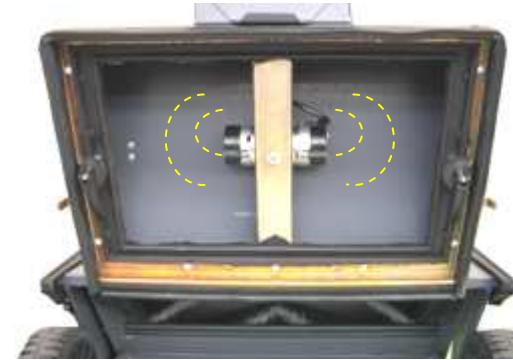
Main brush replacement without tools



Dust filter replacement without tools



Self cleaning filter system



The automatic filter shaking (cleaning) program can be adjusted from intervals that go from every 10 seconds up to every 8 minutes working time.

The filter is shaken 3 times for 5 seconds at intervals of 2 seconds.

The filter can always be shaken (even if set automatically) by the operator at any time



Automatic main brush lift in reverse

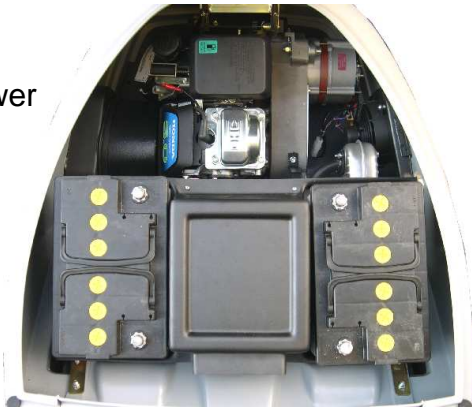
System that avoids the main brush re-circulating dirt (dirtying the surface) in reverse gear. System can be programmed on or off.

1050 Low maintenance costs (2)



Easy access to motor compartment

Dual Power version



Battery Power version



Side and front covers can be easily removed



Easy access to all electrical components

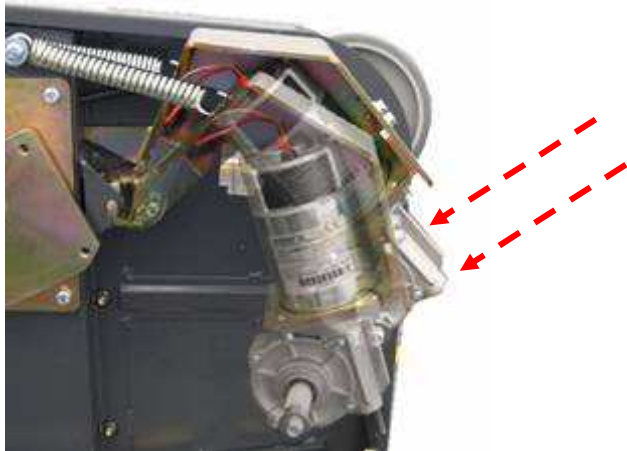


Machine can be tilted vertically for easy maintenance under chassis

1050 Robust construction (1)



Maximum protection against impact



Side brushes retract against impact



Non marking wheels to protect surroundings against impact



Heavy duty chassis in fully coated steel



Rear bumper



Large diameter solid rubber tyres



1050 Robust construction (2)



Panel control switches protected against water and humidity



Resin protect control card



Card filled with resin to prevent vibrations, dust or humidity to get to electronic components

Main brush motor fully protected against dust



Display indicates when engine oil must be changed



Hour counter gives engine run time plus total (engine plus battery) run time.